

RESIDENTIAL

CENTRAL VACUUMS



PERFORMANCE • RELIABILITY • HIGH-END PRODUCTS • EASY MAINTENANCE • QUIET

RELIABLE, POWERFUL, VERSATILE.

**35 YEARS
OF EXPERTISE**

MADE IN CANADA

35 years ago, we started to design products to meet the stringent requirements of the commercial and industrial sectors. The application of our technologies for domestic use is your guarantee of satisfaction for years to come. The proven performance and reliability of our systems are recognized worldwide.



**We clean
up good!**





The Drainvac difference

At a time when nothing seems to be built to last, we are proud to be the exception to the rule.

Innovative products

Drainvac designed and developed the first vacuum cleaning system with a patented automatic drain: the "Automatik" model. It works without a dust bag, nor a filter and the canister never needs to be emptied since the vacuumed materials are evacuated in the sanitary drain. It is virtually maintenance-free and also picks up liquids!

Reliability

It sometimes takes 30 years before certain customers come back to us to replace their unit.

Quiet operation

Units are equipped with soundproof canisters that emit only 58 decibels and air outlets with mufflers: all innovations that decrease noise pollution.

Time saving

A fast and efficient service combined with units so powerful that you don't have to clean the same place twice: Drainvac saves you time.

Improved air quality

SILVERCLEAR

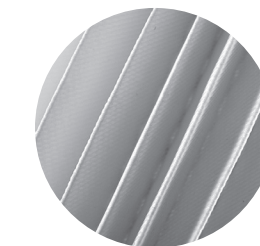
The filter used in every Drainvac system benefits from the **Ultimate Antimicrobial Protection SilverClear™**.

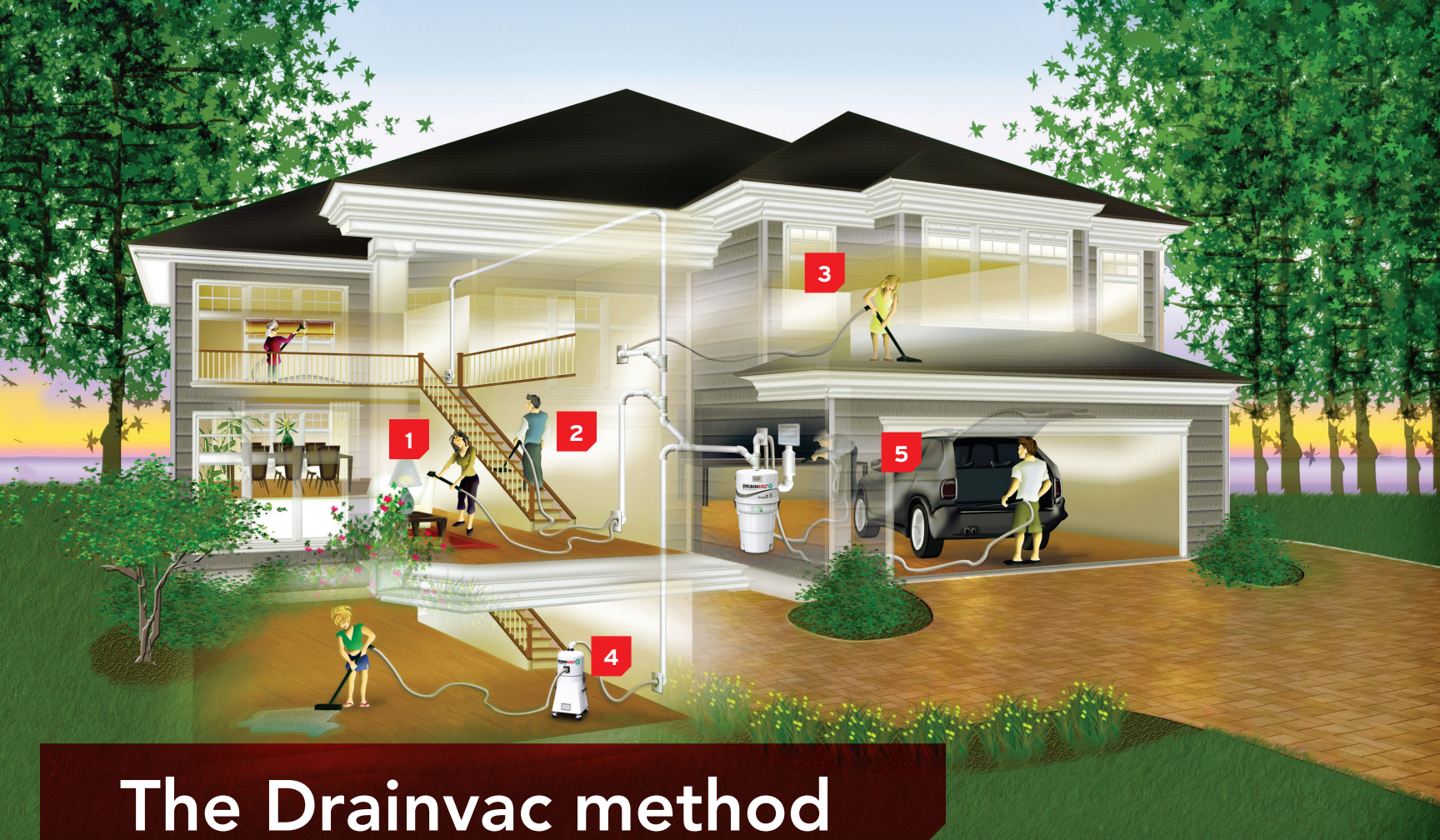
Approved and used for medical applications, each vacuum filter receives an ecological treatment that **eliminates dust mites and germs and neutralizes odors to make the evacuated air by your vacuum as pure as possible.**

HEPA filter

The exhaust-filter Activac 3 is an HEPA filtration system (*High Efficiency Particulate Air*) which can **clean 99.7% of airborne particles in a single passage.**

The Activac 3 is also equipped with an activated charcoal membrane to reduce bad odors.





The Drainvac method

- 1** No risk of damaging any surrounding objects.
- 2** Nothing to carry. Prevents any accidents that can lead to back pain.
- 3** Silent, without any unwanted odors.
- 4** Clean liquid messes with the liquid interceptor even if your system was designed to vacuum dust only.
- 5** Specialized tools are offered for more difficult cleaning tasks.

Fully equipped

Drainvac offers a large product selection to meet your cleaning needs: **with compact or large-capacity units, with or without a bag, conventional or designed to pick up liquids.**

We also offer a wide range of tools and accessories: **turbo brushes, floor brushes for any kind of surface, animal brushes and much more!** For a complete list, please visit our website: www.drainvac.com



ATOMIK MODEL

THE PORTABLE CENTRAL



Vacuum solids



Portable



Operates with a bag



Permanent filter



Silent



Compact



108V-120V MODEL North America

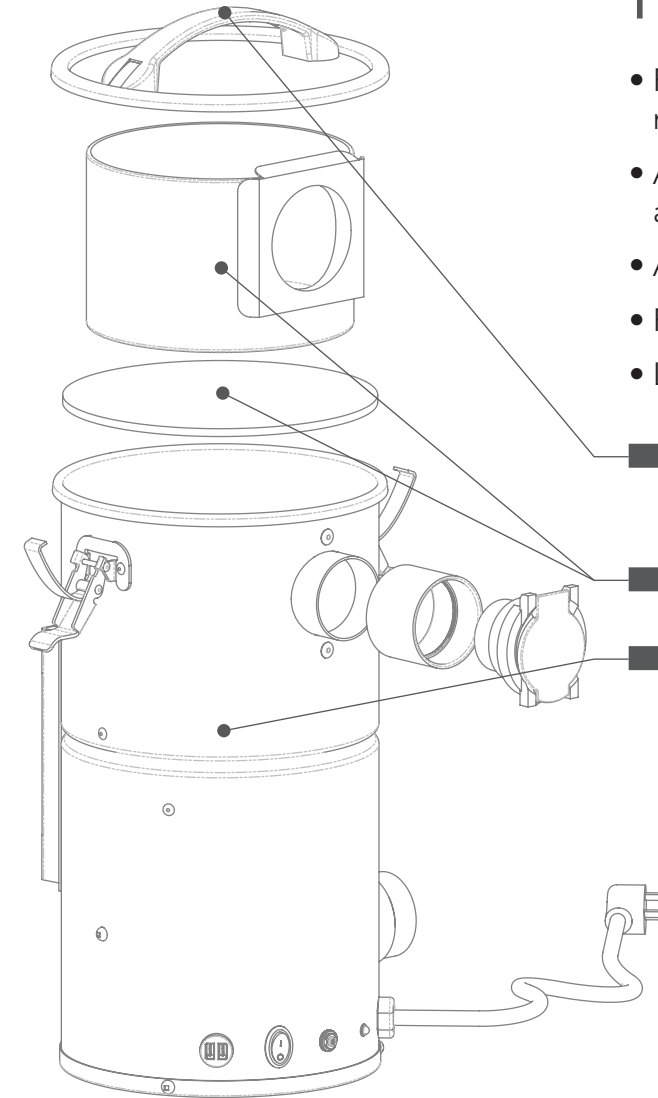
| MODEL | AIR WATTS | H ₂ O | CFM | DECIBELS | MOTOR(S) | AMPS | CAPACITY gal./L | DIMENSIONS in/cm |
|------------|-----------|------------------|-----|----------|----------|-------|-----------------|----------------------------|
| ATOMIK6-30 | 600 | 100 | 154 | 65 | 1 | 12.75 | 0.8 / 3 | 7 dia. x 14 / 18 dia. x 35 |

220V-240V MODEL Europe, Asia, Africa and Oceania

| MODEL | AIR WATTS | mmH ₂ O | m ³ /h | DECIBELS | MOTOR(S) | AMPS | CAPACITY gal./L | DIMENSIONS in/cm |
|-------------|-----------|--------------------|-------------------|----------|----------|------|-----------------|----------------------------|
| ATOMIK60-30 | 600 | 2540 | 266 | 65 | 1 | 6.8 | 0.8 / 3 | 7 dia. x 14 / 18 dia. x 35 |

Features

- Portable model (11 lb / 5 kg); mounts and dismounts in a jiffy!
- As powerful as our regular central vacuum systems, and it uses the same accessories as the regular series.
- Activac exhaust filters included.
- Perfect for the car, RV, cottage, office, boat, etc.
- Lifetime warranty casing.



■ An ergonomic handle on top of the unit allows you to carry the central system.

■ Carries a filter and a dust bag.

■ Casing made of 22 gauge stainless steel.



This central system can vacuum liquids using the liquid interceptor designed for this purpose (RECU-02DVI, as shown on the accessories page). See details in store.



PRO SERIES

MY FIRST SYSTEM



Vacuums solids



Operates with a bag



Permanent filter



Large capacity



Compact



108V-120V MODEL North America

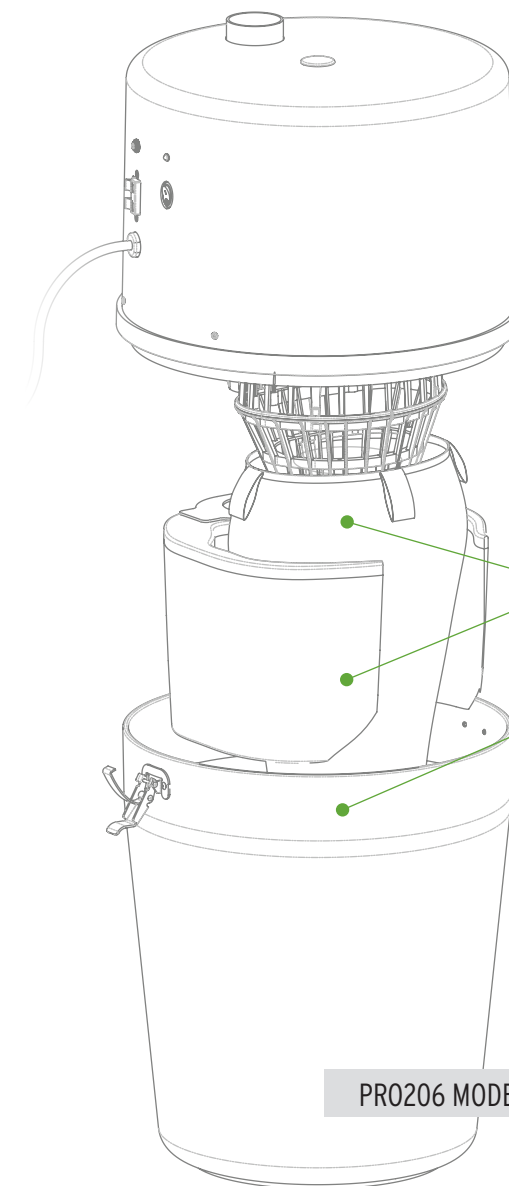
| MODEL | AIR WATTS | H ₂ O | CFM | DECIBELS | MOTOR(S) | AMPS | CAPACITY gal./L | DIMENSIONS in/cm |
|--------|-----------|------------------|-----|----------|----------|------|-----------------|-----------------------------|
| PRO106 | 600 | 125 | 140 | 69 | 1 | 11 | 3.75 / 17 | 12 dia. x 23 / 30 dia. x 58 |
| PRO206 | 600 | 125 | 140 | 69 | 1 | 11 | 9 / 41 | 15 dia. x 28 / 38 dia. x 70 |

220V-240V MODEL Europe, Asia, Africa and Oceania

| MODEL | AIR WATTS | mmH ₂ O | m ³ /h | DECIBELS | MOTOR(S) | AMPS | CAPACITY gal./L | DIMENSIONS in/cm |
|---------|-----------|--------------------|-------------------|----------|----------|------|-----------------|-----------------------------|
| PROE106 | 600 | 3255 | 290 | 69 | 1 | 7 | 3.75 / 17 | 12 dia. x 23 / 30 dia. x 58 |
| PROE206 | 600 | 3255 | 290 | 69 | 1 | 7 | 9 / 41 | 15 dia. x 28 / 38 dia. x 70 |

Features

- When price matters the most: our most economical series!
- Compact models occupying little space (12 in / 30 cm diameter) or models with a greater capacity (15 in / 30 cm diameter).
- Equipped with a polypropylene casing which is 8 times less dense than the competitors (made of steel) and impact resistant.† Lifetime warranty casing.
- Can be used with an Activac 3 **HEPA** exhaust filter or muffler with an exhaust vent, both sold separately.



Permanent **SMS** filter with **SilverClear™** antimicrobial treatment and dust bag included.

A semitransparent canister allows you to see at a glance if the dust bag must be replaced. Casing made in Canada.

PRO206 MODEL



† http://www.boedeker.com/polyp_p.htm

This series can vacuum liquids using the liquid interceptor designed for this purpose (RECU-02DVI, as shown on the accessories page). See details in store.



S1000 SERIES

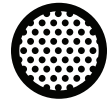
LITTLE EXPERT



Vacuum solids



Operates with a bag



Permanent filter



Silent



Compact



108V-120V MODEL North America

| MODEL | AIR WATTS | H ₂ O | CFM | DECIBELS | MOTOR(S) | AMPS | CAPACITY gal./L | DIMENSIONS in/cm |
|-------|-----------|------------------|-----|----------|----------|------|-----------------|-----------------------------|
| S1006 | 600 | 125 | 140 | 60 | 1 | 11 | 3.75 / 17 | 12 dia. x 23 / 30 dia. x 58 |
| S1008 | 800 | 138 | 138 | 60 | 1 | 13.2 | 3.75 / 17 | 12 dia. x 23 / 30 dia. x 58 |

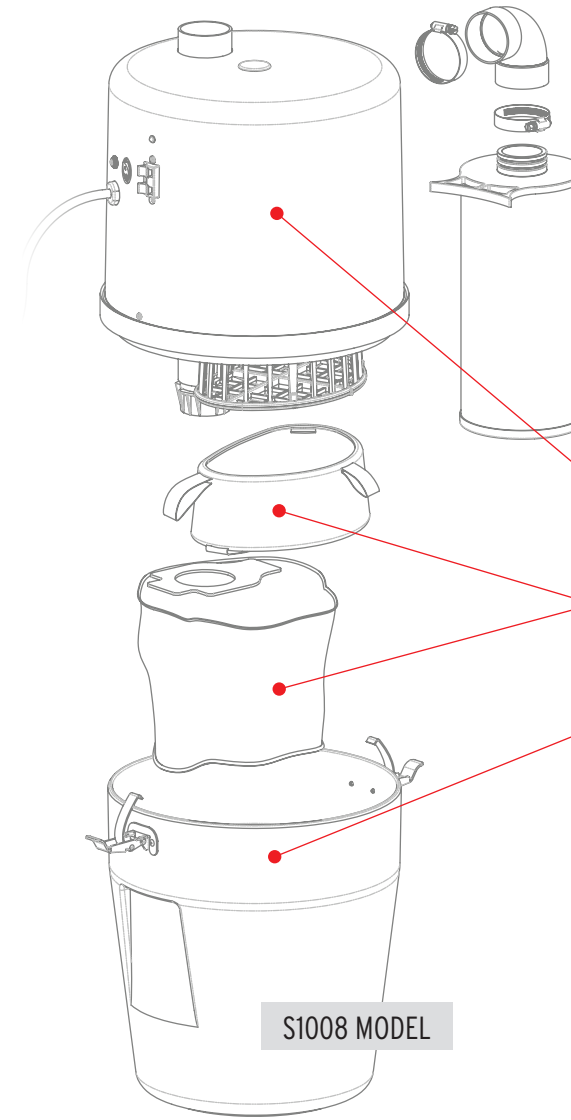
220V-240V MODEL Europe, Asia, Africa and Oceania

| MODEL | AIR WATTS | mmH ₂ O | m ³ /h | DECIBELS | MOTOR(S) | AMPS | CAPACITY gal./L | DIMENSIONS in/cm |
|--------|-----------|--------------------|-------------------|----------|----------|------|-----------------|-----------------------------|
| SE1006 | 600 | 3255 | 290 | 60 | 1 | 7 | 3.75 / 17 | 12 dia. x 23 / 30 dia. x 58 |
| SE1007 | 700 | 3880 | 315 | 58 | 1 | 7 | 3.75 / 17 | 12 dia. x 23 / 30 dia. x 58 |



Features

- A quiet motor from only 58-60 decibels!
- Activac 3 **HEPA** exhaust filters or muffler and exhaust vent provided with the unit.
- Compact models occupying little space.
- Equipped with a polypropylene casing which is 8 times less dense than the competitors (made of steel) and impact resistant.[†] Lifetime warranty casing.



Soundproof casings and circuit board made in Canada.

Permanent **SMS** filter with **SilverClear™** antimicrobial treatment and dust bag included.

A semitransparent tank allows you to see at a glance if the dust bag must be replaced.

S1008 MODEL



[†] http://www.boedeker.com/polyp_p.htm
This series can vacuum liquids using the liquid interceptor designed for this purpose (RECU-02DVI, as shown on the accessories page). See details in store.

GENERATION 2 SERIES

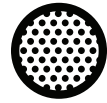
FOR LARGE SURFACES



Vacuum solids



Operates with a bag



Permanent filter



Silent



Large capacity



108V-120V MODEL North America

| MODEL | AIR WATTS | H ₂ O | CFM | DECIBELS | MOTOR(S) | AMPS | CAPACITY gal./L | DIMENSIONS in/cm |
|-----------|-----------|------------------|-----|----------|----------|--------|-----------------|-----------------------------|
| G2-006 | 600 | 125 | 140 | 60 | 1 | 11 | 9 / 41 | 15 dia. x 28 / 38 dia. x 70 |
| G2-008 | 800 | 138 | 142 | 60 | 1 | 14.5 | 9 / 41 | 15 dia. x 28 / 38 dia. x 70 |
| G2-2X3-M* | 2 x 302 | 160 | 105 | 70 | 2 | 13.5 | 9 / 41 | 15 dia. x 28 / 38 dia. x 70 |
| G2-2X5-M* | 2 x 520 | 170 | 135 | 72 | 2 | 13.5** | 9 / 41 | 15 dia. x 28 / 38 dia. x 70 |
| G2-2X7-M* | 2 x 700 | 212 | 140 | 70 | 2 | 14.2** | 9 / 41 | 15 dia. x 28 / 38 dia. x 70 |

**Requires a 208V-240V power socket and must be on its own dedicated breaker.

220V-240V MODEL Europe, Asia, Africa and Oceania

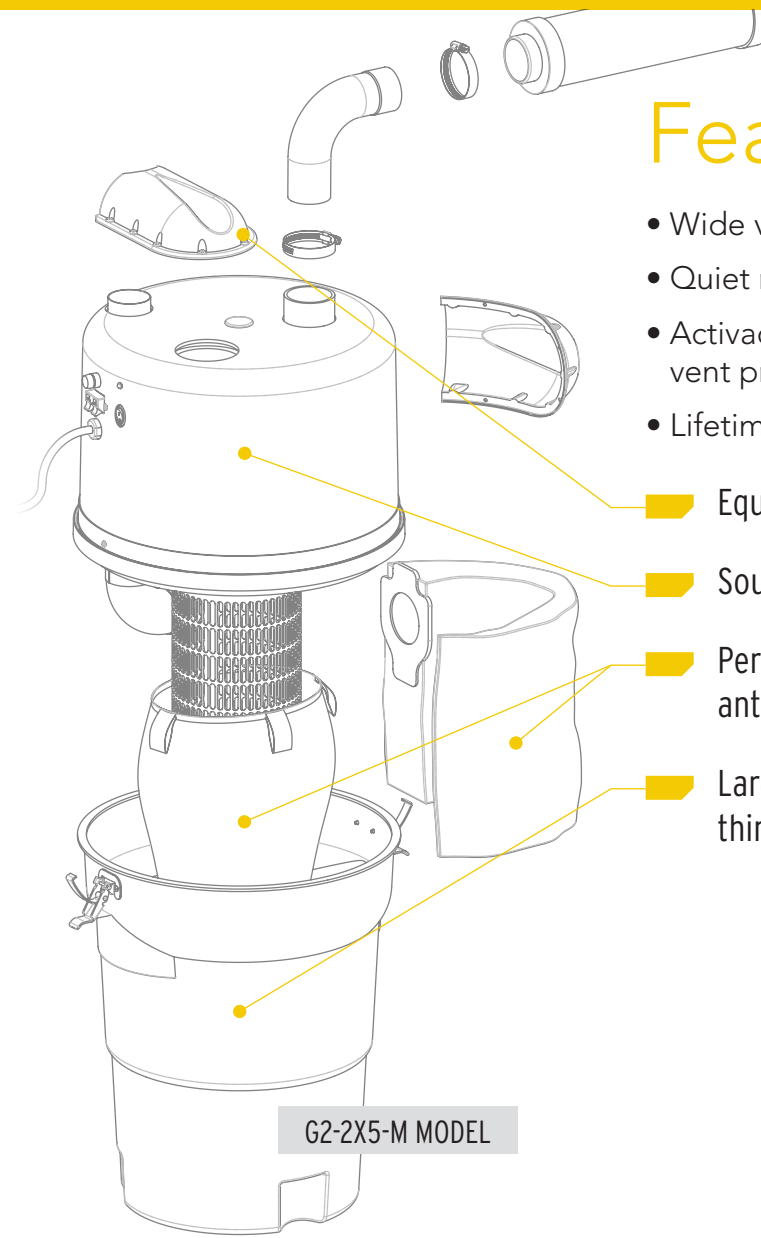
| MODEL | AIR WATTS | mmH ₂ O | m ³ /h | DECIBELS | MOTOR(S) | AMPS | CAPACITY gal./L | DIMENSIONS in/cm |
|------------|-----------|--------------------|-------------------|----------|----------|------|-----------------|-----------------------------|
| G2E-006 | 600 | 3255 | 290 | 60 | 1 | 7 | 9 / 41 | 15 dia. x 28 / 38 dia. x 70 |
| G2E-007 | 700 | 3880 | 315 | 58 | 1 | 7 | 9 / 41 | 15 dia. x 28 / 38 dia. x 70 |
| G2E-2X5-M* | 2 x 520 | 4318 | 271 | 72 | 2 | 14 | 9 / 41 | 15 dia. x 28 / 38 dia. x 70 |
| G2E-2X7-M* | 2 x 700 | 5335 | 238 | 70 | 2 | 14.2 | 9 / 41 | 15 dia. x 28 / 38 dia. x 70 |

*Double motor systems should always be vented outside. Use of Activac 3 is not recommended.



Features

- Wide variety of single or double motor models.
- Quiet motor, from only 58-60 decibels!
- Activac 3* **HEPA** exhaust filters or muffler & exhaust vent provided with the unit.
- Lifetime warranty casing.



- Equipped with **AudioProteks** to reduce high frequencies.
- Soundproof casings and circuit board made in Canada.
- Permanent **SMS** filter with **SilverClear™** antimicrobial treatment and dust bag included.
- Large capacity tank with light and thin panels that are impact resistant.

G2-2X5-M MODEL



This series can vacuum liquids using the liquid interceptor designed for this purpose (RECU-02DVI, as shown on the accessories page). See details in store.

CYCLONIK SERIES

HYBRID SYSTEM



Vacuums solids



Vacuums liquids



Silent



Operates without a bag



Large capacity



108V-120V MODEL North America

| MODEL | AIR WATTS | H ₂ O | CFM | DECIBELS | MOTOR(S) | AMPS | CAPACITY gal./L | DIMENSIONS in/cm |
|----------|-----------|------------------|-----|----------|----------|------|-----------------|-----------------------------|
| DV1R11 | 483 | 125 | 111 | 66 | 1 | 12.5 | 10 / 46 | 15 dia. x 38 / 38 dia. x 95 |
| DV1R15 | 2 x 355 | 160 | 106 | 70 | 2 | 18 | 10 / 46 | 15 dia. x 38 / 38 dia. x 95 |
| DV1R700* | 700 | 140 | 160 | 58 | 1 | 12.5 | 10 / 46 | 15 dia. x 38 / 38 dia. x 95 |

220V-240V MODEL Europe, Asia, Africa and Oceania

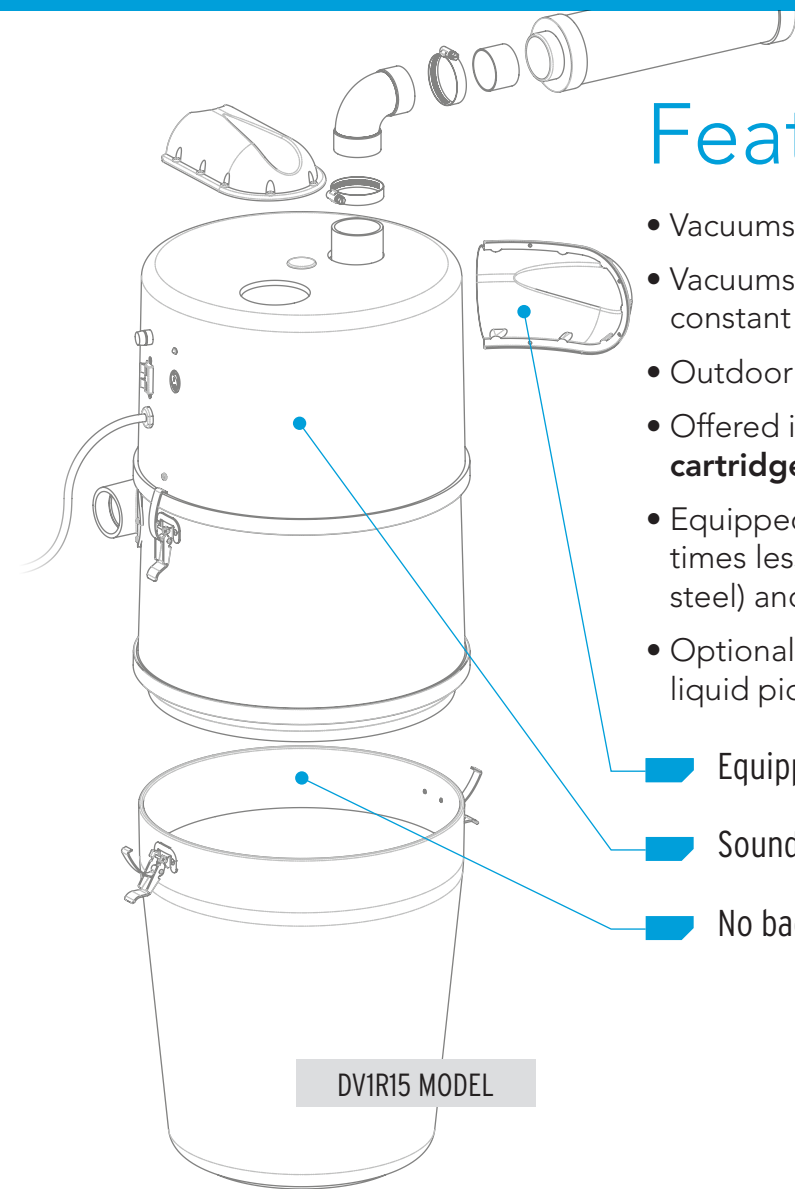
| MODEL | AIR WATTS | mmH ₂ O | m ³ /h | DECIBELS | MOTOR(S) | AMPS | CAPACITY gal./L | DIMENSIONS in/cm |
|----------|-----------|--------------------|-------------------|----------|----------|------|-----------------|-----------------------------|
| DF1R11 | 483 | 3148 | 245 | 66 | 1 | 7 | 10 / 46 | 15 dia. x 38 / 38 dia. x 95 |
| DF1R15 | 2 x 355 | 4191 | 198 | 70 | 2 | 10.8 | 10 / 46 | 15 dia. x 38 / 38 dia. x 95 |
| DF1R630* | 700 | 3880 | 315 | 58 | 1 | 7 | 10 / 46 | 15 dia. x 38 / 38 dia. x 95 |

*Models DV1R700 & DF1R630 are not recommended to vacuum liquids unless paired with the liquid interceptor (RECU-02DVI as shown on the accessories page). See details in store.



Features

- Vacuums both dry and liquid substances.**
- Vacuums with cyclonic effect and maintains a constant and optimal suction power.
- Outdoor exhaust required.
- Offered in multiple options; **foam filter, filter cartridge, float.**
- Equipped with a polypropylene casing which is 8 times less dense than the competitors (made of steel) and impact resistant.† Lifetime warranty casing.
- Optional float available. Recommended for frequent liquid pick-ups.*



- Equipped with **AudioProteks** to reduce high frequencies.
- Soundproof casings made in Canada.
- No bag needed. Empty and clean the canister when necessary.



† http://www.boedeker.com/polyp_p.htm

* Applies for models: DV1R11, DF1R11, DV1R15 and DF1R15.

** Except models DV1R700 & DF1R630 for which we do not recommend vacuuming liquids unless paired with the liquid interceptor (RECU-02DVI as shown on the accessories page). See details in store.

AUTOMATIK SERIES

SELF-FLUSHING SYSTEM



Vacuums solids



Vacuums liquids



Silent



Operates without a bag



Easy maintenance



Large capacity



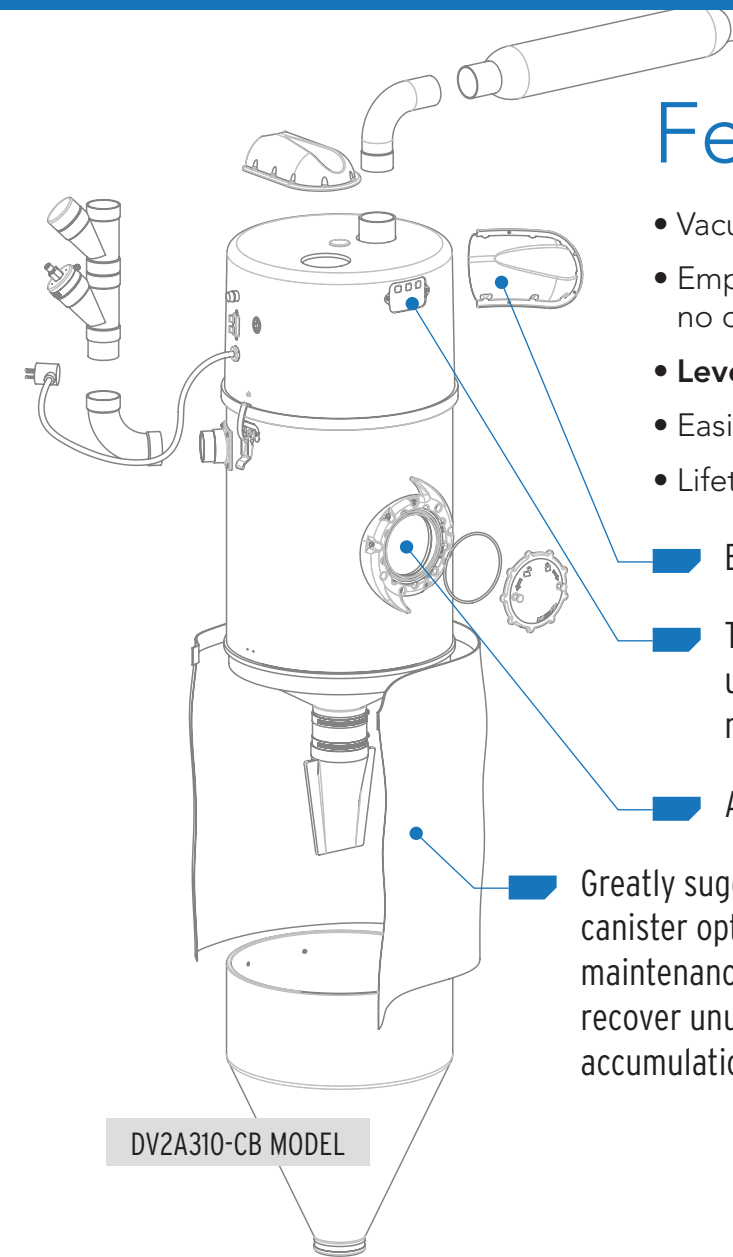
108V-120V MODEL North America

| MODEL | AIR WATTS | H ₂ O | CFM | DECIBELS | MOTOR(S) | AMPS | CAPACITY gal./L | DIMENSIONS in/cm |
|------------|-----------|------------------|-----|----------|----------|------|-----------------|------------------------------|
| DV1A150-CB | 700 | 125 | 150 | 66 | 1 | 12 | 4 / 18 | 12 dia. x 63 / 30 dia. x 160 |
| DV1A310-CB | 2 x 355 | 160 | 106 | 70 | 2 | 18 | 6 / 29 | 15 dia. x 65 / 38 dia. x 165 |

220V-240V MODEL Europe, Asia, Africa and Oceania

| MODEL | AIR WATTS | mmH ₂ O | m ³ /h | DECIBELS | MOTOR(S) | AMPS | CAPACITY gal./L | DIMENSIONS in/cm |
|------------|-----------|--------------------|-------------------|----------|----------|------|-----------------|------------------------------|
| DF1A150-CB | 525 | 3605 | 215 | 66 | 1 | 7 | 4 / 18 | 12 dia. x 63 / 30 dia. x 160 |
| DF1A310-CB | 2 x 355 | 4191 | 198 | 70 | 2 | 10.8 | 6 / 29 | 15 dia. x 65 / 38 dia. x 165 |

*Available without the lower canister in case of insufficient space or in split option (separated head from the unit) to lower noise where the unit is installed.



DV2A310-CB MODEL

Features

- Vacuums both dry and liquid substances.
- Empties itself directly into drain: no bag to replace, no canister to empty; everything is automated!
- **LevelSMART**: stops and empties the unit when it is full.
- Easily adapted to your needs; split version in option.
- Lifetime warranty casing.

Equipped with **AudioProteks** to reduce high frequencies.

The membrane adjusts the draining time of the unit, indicates the 500-hour count for a service maintenance and has an on/off switch.

A porthole allows you to reach internal components for maintenance.

Greatly suggested, the lower canister option facilitates the maintenance and allows you to recover unusual materials, hair accumulation, animal fur, etc.



THE ESSENTIALS FOR YOUR SYSTEM



Disposable 2-ply paper dust bags or 3-ply cloth dust bags



SMS filter with SilverClear™ antimicrobial treatment



Activac3 exhaust filter with active carbon and HEPA filtration

ENHANCE YOUR CLEANING EXPERIENCE WITH OUR SPECIALIZED TOOLS & ACCESSORIES



Flexible 24" Crevice Tool
OUTI-32



Mini Turbo Brush
TUR2125-DV



Accessory Kit
KIT130C



Liquid interceptor
RECU-02DV
Ideal to pick up liquid messes, water damages and to clean carpets and couches.
Can be used as an add-on on any central vacuum system that only picks up solids.



Power Head With Wand
BA06125-DV



Turbo Brush
TUR5125-DV



Hose Cover
Quilted cover with zipper.
Blue HOUS-04 **Taupe** HOUS-08
Platinum HOUS-06 **Grey** HOUS-10



Cyclonic action separator
SEPA-15
Ideal to pick up wood, water and even sand. Perfect for handymen.
Can be used as an add-on on any central vacuum system that only picks up solids.



Vacpan
Available in white (PR22125), beige, silver, grey and black



Wallyflex
Available in white (WALLY-01) and black



Animal Brush
BR-4301



Cleaning Kit
LAVE05B



Hide-A-Hose system
The flexible hose is concealed in the vacuum system's duct network, behind an inlet. Once finished, the hose quickly retracts itself with the vacuum's suction power.



Separator
RECU-04
Ideal to pick up ashes, plaster, liquids and more. Made in aluminum.
Can be used as an add-on on any central vacuum system that only picks up solids.

DISCOVER OUR COMMERCIAL & INDUSTRIAL RANGE

Drainvac offers a wide range of commercial and industrial products which can be combined with one another to offer a configuration that will answer perfectly to specific needs.

On the industrial level, Drainvac is also specialized to design customised devices for businesses with power that can go up to 50 HP!



Commercial



Industrial



**AN IMPRESSIVE
NETWORK OF RETAIL
OUTLETS THAT KEEPS ON
EXPANDING!**



DRAINVAC International 2006 Inc.
150 Brunet, Mont-Saint-Hilaire,
QC, J3H 0M6, Canada

T : 800 408.1448 • 450 467.1448
F : 877 408.2225 • 450 467.2225
info@drainvac.com
www.drainvac.com

Business hours:
Monday to Thursday:
8:30 a.m. to 4:30 p.m.
Friday: 8:30 a.m. to 3:00 p.m.

A VARIETY OF
**SPECIALIZED
APPLIANCES**

ADAPTED TO YOUR
SPECIAL NEEDS.

Drainvac International





Drainvac is proud to be partnered with the MIRA foundation. Do not hesitate to ask about our Mira flyer. By purchasing one of these products, you contribute to the Mira mission. To know more about different ways you can make a donation, visit www.mira.ca
